

SOUNDTRAXX™ DCC

SoundTraxx DCC Digital Sound Decoders for Command Control

SoundTraxx Digital Sound Decoders (DSD) are state-of-the-art modules providing the benefits of today's DCC technology with the addition of high quality, digital onboard sound. Each DSD installs inside your locomotive and integrates a full featured digital sound system, sophisticated lighting effects and a DCC decoder into a single, miniature electronic module.

- COMPATIBLE WITH NMRA DCC STANDARDS & RPs
- SUPPORTS BOTH SHORT AND LONG ADDRESSES
- 7 BIT CONSIST ADDRESSING
- SUPPORTS 14, 28, AND 128 SPEED STEP MODES
- PROGRAMMABLE ACCELERATION, DECELERATION, STARTING VOLTAGE AND SPEED STEPS
- USE OF STANDARD AND ALTERNATE SPEED TABLES

Prototypical Operation and Superb Sound!

Operate the locomotive, lights and sound in prototypical fashion with a decoder that also offers the best in digital sound technology! Prototypical *sound* is achieved as easily as pressing the appropriate button on your DCC controller. SoundTraxx DCC's Polyphonic Sound Processor allows you to activate sound effects without interrupting or interfering with the other sounds.

A Decoder for Everyone!

The DSD is available in several models, all compatible with the NMRA DCC Standards and Recommended Practices. Please refer to our latest price list for part numbers and ordering information.

Brilliant Lighting Effects!

The DSD exactly reproduces the light patterns of a number of popular warning beacons - Mars Light, Dual Oscillating Headlights, Strobes, Rotary Beacons and more!

SOUNDTRAXX DSD-150 \$179.00

STEAM SOUND EFFECTS INCLUDE: STEAM EXHAUST CHUFF, BELL, STEAM WHISTLE, DYNAMO, AIRPUMP, CYLINDER BLOWDOWN, FIREBOX BLOWER

DIESEL SOUND EFFECTS INCLUDE: ENGINE STARTUP, ENGINE EXHAUST, BELL, AIRHORN, DYNAMIC BRAKES, COMPRESSOR POP OFF

DSD-150's provide sound, lights and a 1.5 amp motor driver for use in most HO, S and some O-scale locomotives.

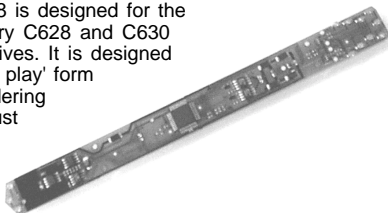


DSD-C628 For the Stewart C628 \$179.00

DIESEL SOUND EFFECTS INCLUDE: ENGINE EXHAUST, BELL, THREE AIRHORNS, DYNAMIC BRAKES

In addition to the above sound effects each DSD-C628LC comes with headlight, backup light, classification lights and number board lights!

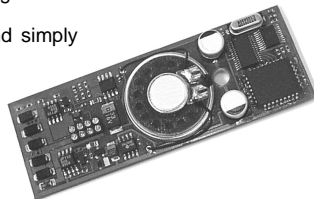
The DSD-C628 is designed for the Stewart Century C628 and C630 diesel locomotives. It is designed as a 'plug and play' form factor, no soldering necessary! Just replace the existing Stewart light board with the DSD! A 1" speaker is included.



DSD FOR BACHMANN 2-8-0 \$155.00

STEAM SOUND EFFECTS INCLUDE: STEAM EXHAUST CHUFF, BELL, THREE STEAM WHISTLES, AIRPUMP

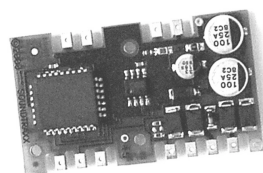
The DSD-B280 is designed for the Bachmann 2-8-0 Consolidation and simply 'plugs and plays', no soldering necessary! The speaker is already built in; just open the tender, remove the NMRA DCC plug, and plug in the DSD! Close up the tender and you are ready to go!



DSD-LL100LC For Lifelike E/PA/FA \$149.00

DIESEL SOUND EFFECTS INCLUDE: ENGINE EXHAUST, BELL, THREE AIRHORNS, DYNAMIC BRAKES

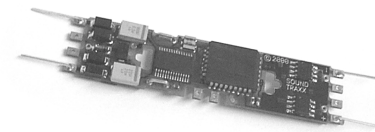
The DSD-LL100LC comes as two models; one for Lifelike Proto 2000 E-Series diesel locomotives and one for ALCO PA/FA Series diesel locomotives. It is designed as a 'plug and play' form factor, no soldering necessary! Just replace the existing Lifelike light board with the DSD! A 1" speaker is included.



DSD-KT100LC For Kato Diesels \$145.00

DIESEL SOUND EFFECTS INCLUDE: ENGINE EXHAUST, BELL, THREE AIRHORNS, DYNAMIC BRAKES

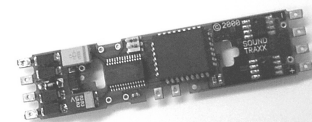
The DSD-KT100LC comes in three models; EMD 1st generation, EMD 2nd generation and ALCO. It is designed as a 'plug and play' form factor, no soldering necessary! It will fit many Kato diesel locomotives and some Stewart HO diesel locomotives. Just replace the existing light board with the DSD! Two Hyperlight outputs are included. No speaker is included with this model.



DSD-AT100LC For Atlas Diesels \$139.00

DIESEL SOUND EFFECTS INCLUDE: ENGINE EXHAUST, BELL, THREE AIRHORNS, DYNAMIC BRAKES

The DSD-AT100LC comes in three models; EMD 1st generation, EMD 2nd generation and ALCO. It is designed as a 'plug and play' form factor, no soldering necessary! It will fit many Atlas diesel locomotives and Athearn Genesis series HO diesel locomotives. Just replace the existing light board with the DSD! Two Hyperlight outputs are included. No speaker is included with this model.

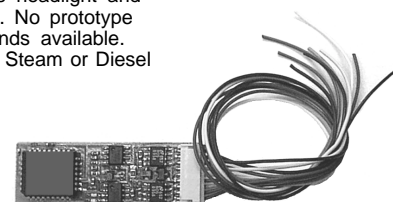


SOUNDTRAXX DSD-100LC \$99.95

STEAM SOUND EFFECTS INCLUDE: STEAM EXHAUST CHUFF, BELL, THREE STEAM WHISTLES, AIRPUMP

DIESEL SOUND EFFECTS INCLUDE: ENGINE EXHAUST, BELL, THREE AIRHORNS, DYNAMIC BRAKES

The DSD is a 1 amp decoder and includes headlight and backup light. No prototype specific sounds available. Order either Steam or Diesel versions.

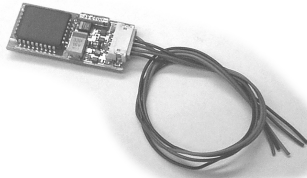


SOUNDTRAXX DSX SOUND ONLY \$129.00

STEAM SOUND EFFECTS INCLUDE: STEAM EXHAUST CHUFF, BELL, STEAM WHISTLE, DYNAMO, AIRPUMP, CYLINDER BLOWDOWN, FIREBOX BLOWER

DIESEL SOUND EFFECTS INCLUDE: ENGINE STARTUP, ENGINE EXHAUST, BELL, AIRHORN, DYNAMIC BRAKES, COMPRESSOR POP OFF

The DSX is designed to add super sound to an already existing motor decoder! Put it in a boxcar or dummy engine if space is tight!



DSD FOR BACHMANN HO SHAY \$149.00

STEAM SOUND EFFECTS INCLUDE: STEAM EXHAUST CHUFF, BELL, THREE STEAM WHISTLES, AIRPUMP

The DSD-B3TS is designed for the Bachmann HO three-truck Shay. The decoder simply plugs in; no soldering necessary! Just open the tender, remove the NMRA DCC plug, and plug in the DSD! Close up the tender, install the speaker in the bunker and you are ready to go! **SHIPPING MARCH 2001!**

DSD FOR LIFELIKE PROTO 2000 DIESELS \$145.00

DIESEL SOUND EFFECTS INCLUDE: ENGINE EXHAUST, BELL, THREE AIRHORNS, DYNAMIC BRAKES

The DSD-LL110LC comes in two models; EMD 1st generation and EMD 3rd generation. It is designed as a 'plug and play' form factor, no soldering necessary! It will fit Lifelike Proto 2000 GP7, GP9, GP30 and SD60 diesel locomotives. Just replace the existing light board with the DSD! Two Hyperlight outputs are included. No speaker is included with this model. **SHIPPING MARCH 2001!**

SOUNDTRAXX ACCESSORIES

SoundTraxx makes an assortment of accessories designed to make your sound installation easy and fun! See our current price list for part numbers and pricing information.

Speakers - SoundTraxx has a number of speakers for use with our sound systems.

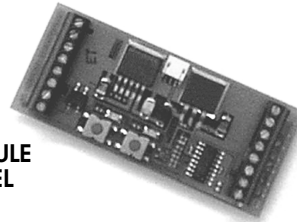
Microconnectors - for disassembly of the locomotive for service or painting.

Sierra-specific Accessories - Firebox Lights, Coupler Clank Sensor Switches, Remote Volume Controls Switches, Battery Charging Kits and more!

Lighting Accessories - to assist you in taking advantage of the lighting features built in to our Sound Systems.



ONBOARD SOUND MODULE FOR LARGE-SCALE MODEL RAILROADS



SoundTraxx SIERRA is the highest quality digital sound system available for the large-scale model railroader. Each SoundTraxx SIERRA is specific to a prototype, meaning you get exactly what you expect...the real sounds from actual engines. And SoundTraxx SIERRA's sound effects aren't just simple playback loops. Each effect is interactive and will respond to you, the engineer, just like the prototype. This compact sound system installs quickly and easily onboard your locomotive and is powered from a single rechargeable battery, which recharges automatically from the track or an optional recharger. Simple terminal block connections means fast and easy installation with a minimum of fuss. Everything you need to get started is included; the battery, instructions and speaker.

- High Quality Digital Sound available in a variety of prototypes
- Polyphonic sound processor - multiple sound effects can be played simultaneously
- Small Size for easy installation
- Special Lighting Effects

SoundTraxx Sierra offers true prototypical sound and lighting. Sounds can be activated by use of a radio control device and activated by simply pressing the appropriate key on the controller. The duration of the whistle or airhorn is directly related to how long the key is held, allowing for long or short whistles at will. For those with a simple powerpack, the sounds can be activated by use of magnets placed in strategic locations about the layout or by using the track voltage.

STEAM SOUND EFFECTS:

- Steam Exhaust Chuff
- Steam Whistle
- Airpumps
- Firebox Blower
- Coupler Clank
- Bell
- Dynamo
- Cylinder Blowdown
- Fireman 'Fred'
- Pop Valve

DIESEL SOUND EFFECTS:

- Engine Startup
- Engine Exhaust (1-notch 8)
- Airhorn
- Coupler Clank
- Bell
- Dynamic Brakes
- Airtank Pop Valve

Brilliant Lighting Effects!

As an added bonus, the Sierra Diesels exactly reproduce the light patterns of a number of popular warning beacons - Mars Light, Dual Oscillating Headlights, Strobes, Rotary Beacons and more! **All part of the Sierra circuit board!**

SOUNDTRAXX SIERRA (Most Models) \$189.00

*Please refer to current price list for prices and ordering information.

SOUNDTRAXX™

Short Form Catalog

March 2001

SoundTraxx designs, manufactures and sells premium quality electronics for the discriminating modeler. Whether you are a novice or an expert SoundTraxx has something for you!



Digital Sound Decoders

This Short Form Catalog will give you a brief overview of our product line. For additional information, send \$1.00 and specify product interest to:

SoundTraxx
210 Rock Point Drive
Durango, CO 81301
(970) 259-0690 FAX (970) 259-0691
Email: sales@soundtraxx.com